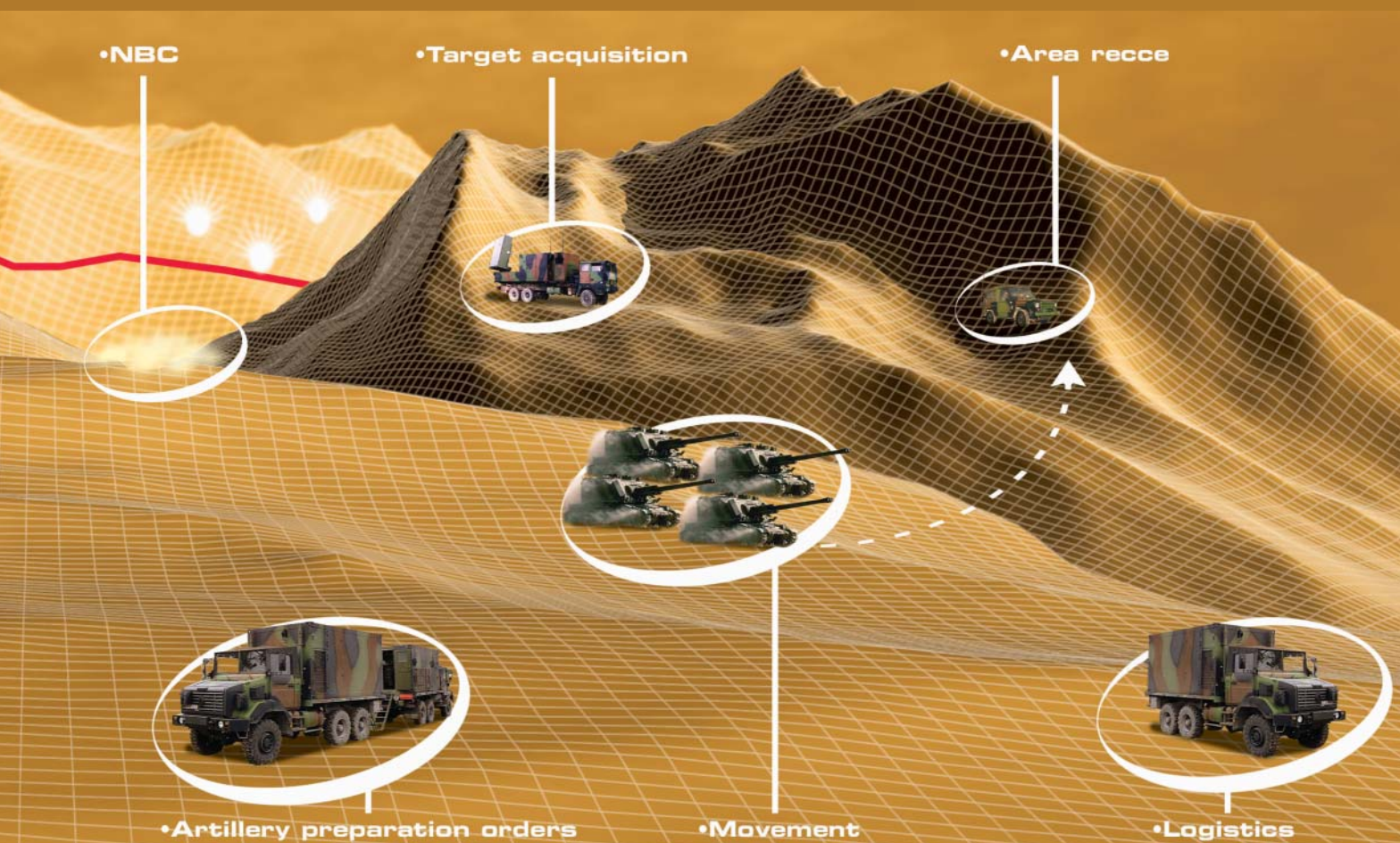
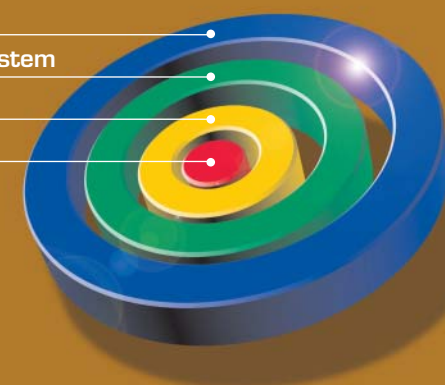


artillery

- Optimised regiment fire control
- Interoperability of artillery regiments
- Complete command and control system for all artillery missions from planning to deployment and execution
- Full interoperability with external systems

External interoperability
 Command and control system
 Artillery interoperability
 Fire control system



Deployment:

- Unit reinforcement management
- Management of area recce orders and reports
- Unit movement control
- Management of intelligence orders and reports
- NBC data and report

Services:

- Event and alarm management
- Message management
- Private / Public workspaces
- Integrated communications
- Users profile management
- Database management
- Data backup management
- Printing services
- Request editor
- Hot standing

LAND & JOINT SYSTEMS

SELECTED FOR NATO RESPONSE FORCE

IN SERVICE



ATLAS
 The ultimate C4I system for artillery

THALES

Land & Joint Systems
 160, boulevard de Valmy - BP 82 - 92704 Colombes Cedex - FRANCE
 Phone: +33 (0)1 41 30 30 00 - Fax: +33 (0)1 41 30 33 57 - www.thalesgroup.com

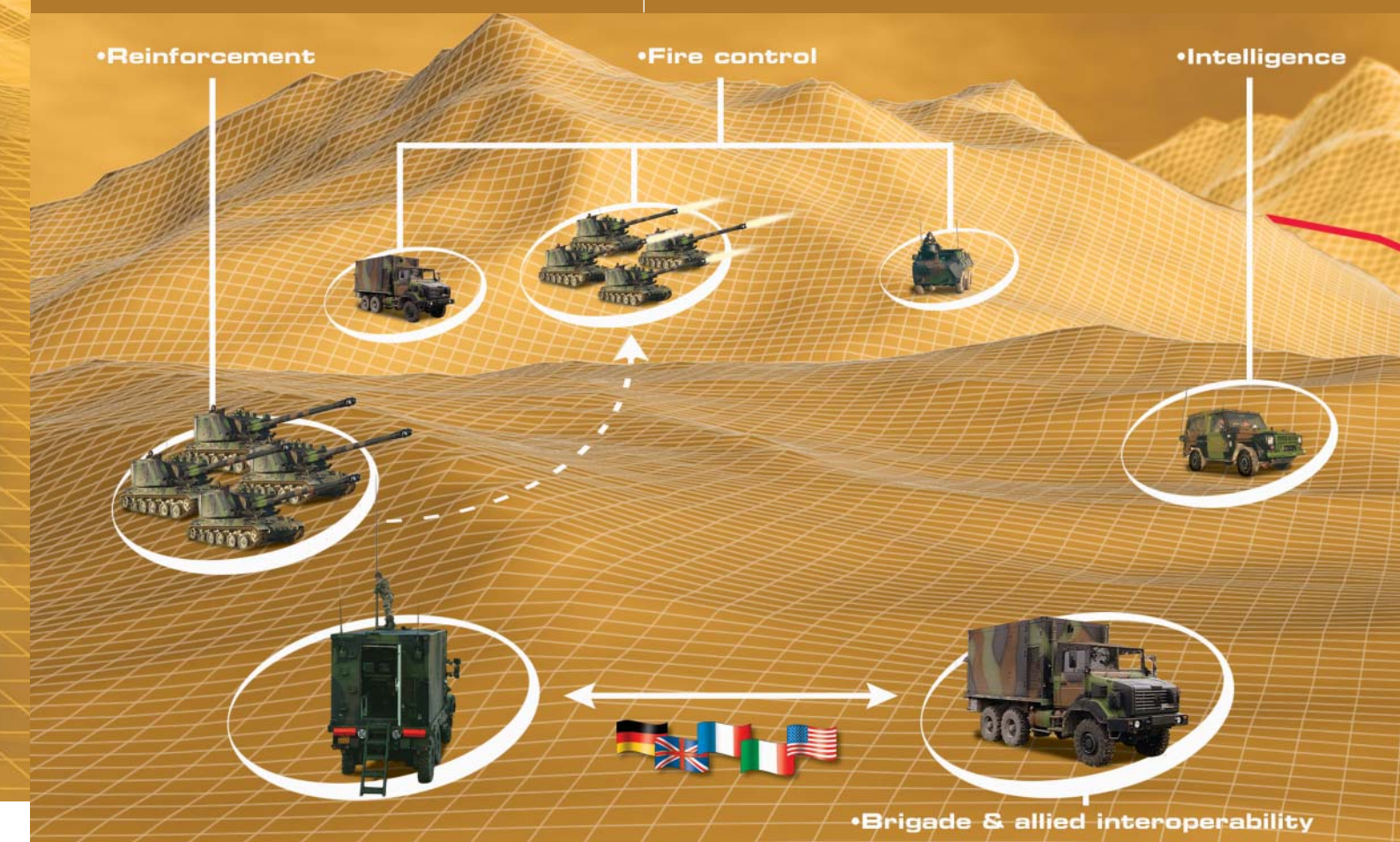
Creation KRPLUS [24328]

www.thalesgroup.com

The ultimate C4I system for

ATLAS: a complete C4I for artillery

Following previous generations of systems, mainly designed in the 80's and 90's as simple regiment fire control systems, ATLAS offers the highest level of service available today: a fully interoperable C4I solution for all artillery missions and resources.



Planning:

- Fire planning
- Target lists and catalogues
- Logistics management
- Preparation and management of artillery orders and reports
- Management of brigade and allied forces orders and reports

Execution:

- Situation awareness
- Target acquisition (manual, optronics, radar, goniometer, counterbattery radar, etc)
- Optimised targets correlation
- Optimised fire missions
- Optimised fire unit allocation
- 2D and 3D safety control
- Unit status real-time display



From artillery to digital battlefield

ATLAS manages all artillery data and activity, from gun level up to brigade/division level, including all supporting or associated resources. ATLAS manages:

- > Gun regiments
- > Mortar regiments or platoons
- > Counterbattery radar units
- > Unmanned aerial vehicles (UAV) acquisition means
- > Meteorological stations
- > Brigade or division level artillery

A real-time and tactical information system

ATLAS is designed to meet the high-level requirements of a modern artillery battlefield information system:

- > High level of automation
 - Automatic orders & reports
 - Automatic situation awareness
 - Automatic safety control
 - Automatic fire control for all artillery regulations
 - Automatic fire unit allocation
- > High level of survivability
 - Hot standing and switch over for Commanding Units
 - Dynamic reconfiguration of units
 - Data backup between CPUs and vehicles
- > High mobility
 - Tactical vehicles
 - Tactical radio means
 - Multiple tactical radio networks management including automatic relaying

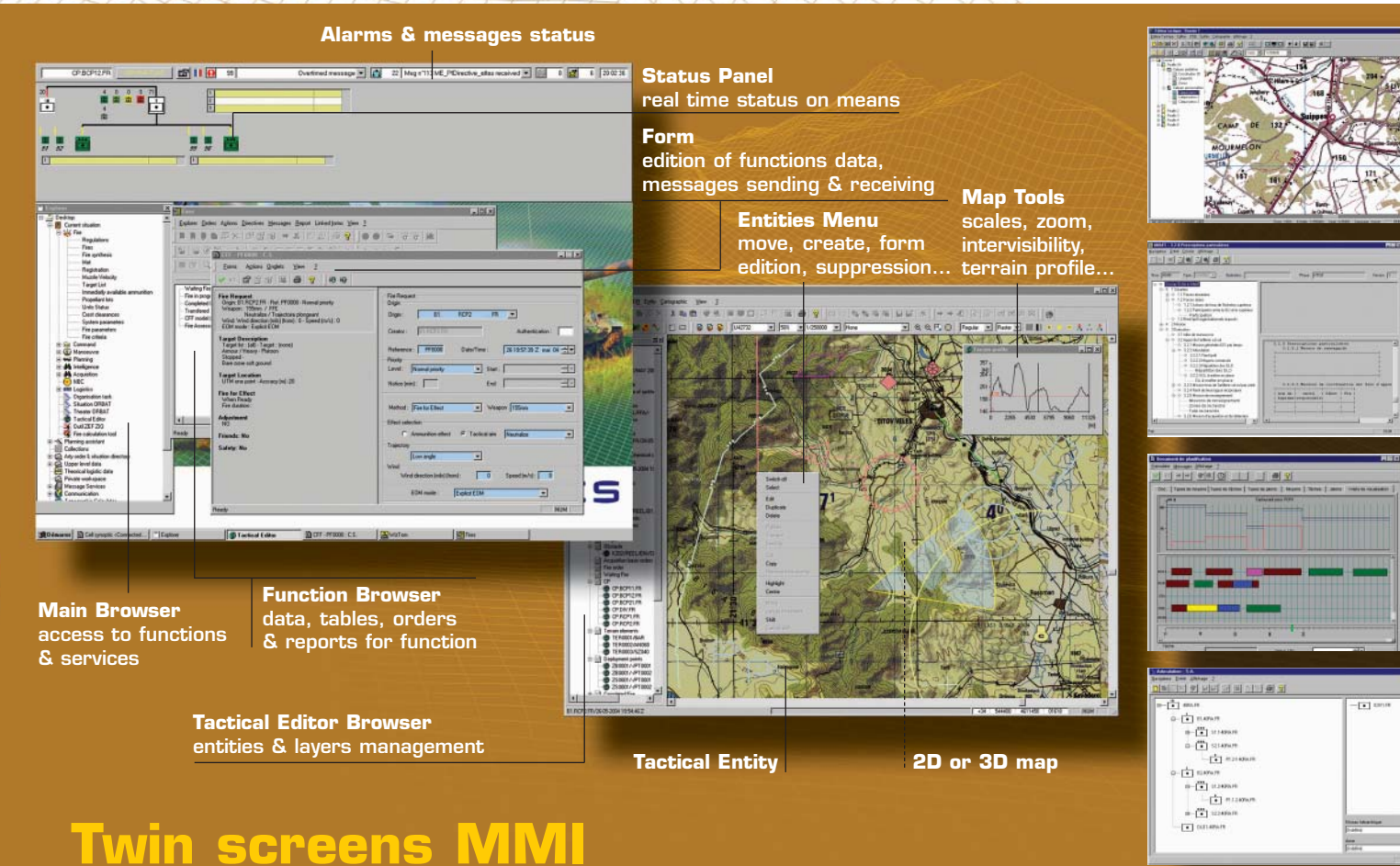
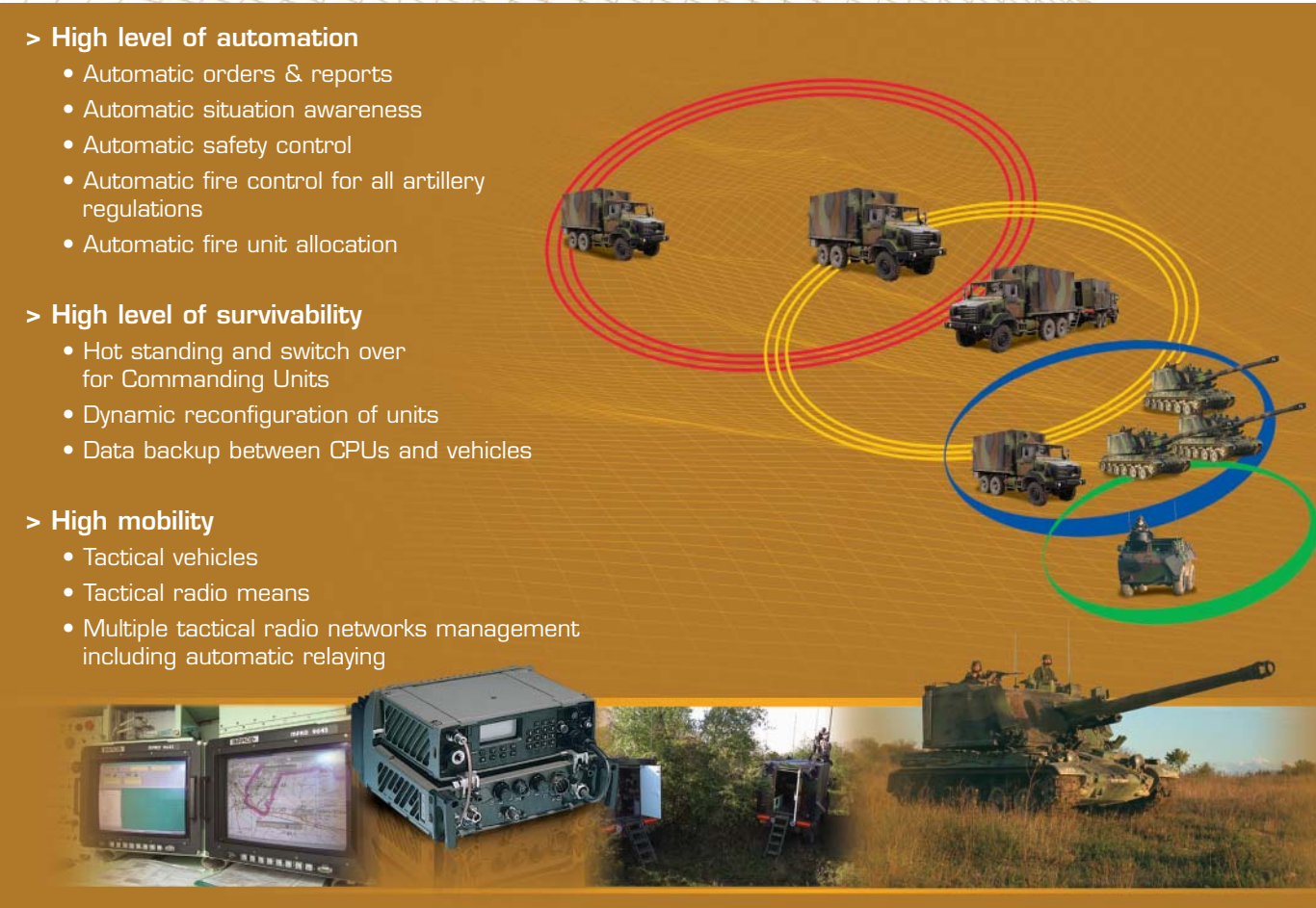
Scalable system for customised solutions

ATLAS is designed for dynamic system reconfiguration to adapt to any operational structure and to any operational engagement mode at any time:

- > Single mortar platoon
- > Autonomous battery
- > Light artillery regiment
- > Heavy artillery regiment
- > Major artillery formation, including interoperability with other regiments and headquarters

State-of-the-art modular software

The ATLAS system's modular software, running on Windows platforms, offers a broad range of functions and services for all artillery activities, adapted to user profiles (from observer equipped with a touchscreen PC up to command vehicle with a workstation including 4 TFT displays) and adapted to mission types.

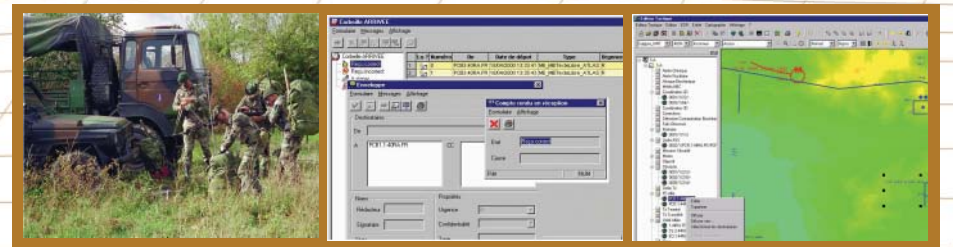


As a main component of the digital Battlefield, ATLAS is also interconnected and interoperable with other armed forces systems:

- > Other artillery regiments (guns, mortars, MLRS ...)
- > Allied artillery regiments
- > Land forces headquarters C4I system
- > Combat units supported by artillery
- > Logistics regiments

Message exchange format:

- > Allied format: ASCA
- > French army format: SICAT
- > Specific formats: MLRS, COBRA, etc



ATLAS runs on numerous tactical means in use in modern Artillery units:

- > **Tactical networks**
 - Typically 8 networks per regiment, with automatic relaying within and between networks
 - Digital data transmission on PR4G radio and all radio means equipped with data channel
 - Hot standing on all command vehicles (RCP, BCP, brigade interface)
- > **Tactical vehicles**
 - 4x4 wheeled vehicles
 - Light armoured vehicles
 - Shelters

Thanks to ruggedised hardware and system modularity, ATLAS offers a broad range of customised solutions, including:

- Modular ballistic kernel suitable for various types of guns
- Various ruggedised computer configurations
 - > Portable touchscreen PC
 - > 1 TFT display PC
 - > 2 TFT displays workstations
 - > Ethernet networks of up to 4 workstations in 2 command vehicles
 - > B&W and colour printers
 - > Rugged PDA
- Tactical radio set (PR4G, etc)
- Ethernet links and intercom service between vehicles (SMTP, TCP/IP...)
- Integration kits :
 - > Air conditioner
 - > Electricity generator
 - > Energy management electronics
 - > Boards, storage case, ergonomic seats, etc

One screen MMI

